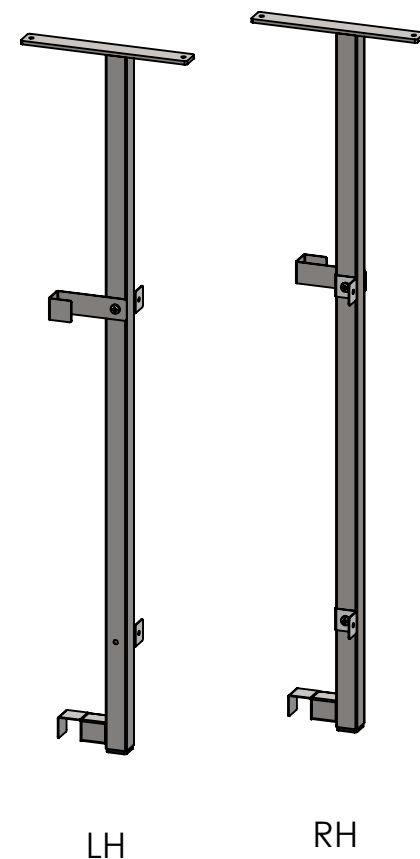
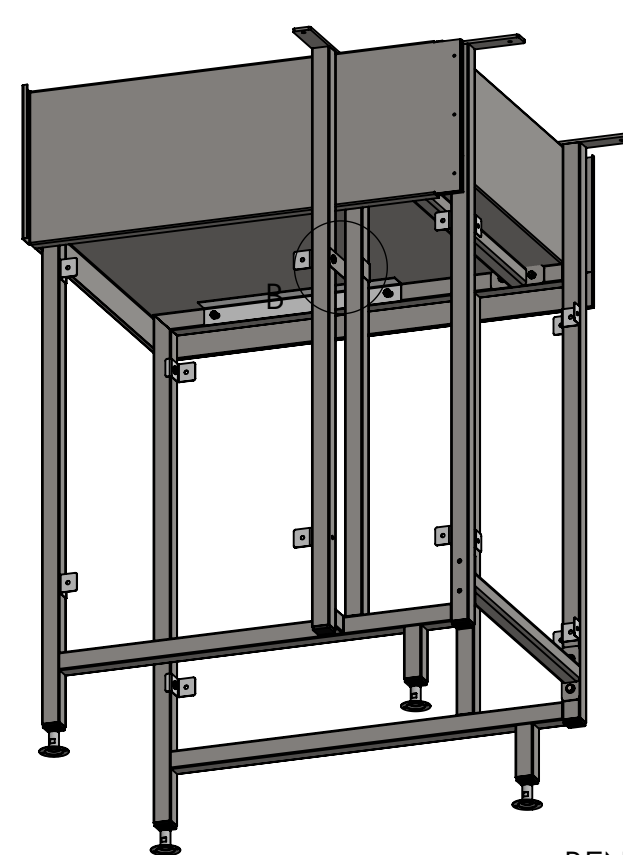


**FRAME**  
SCALE:1:12@A3

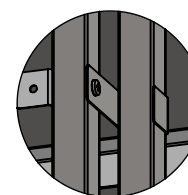
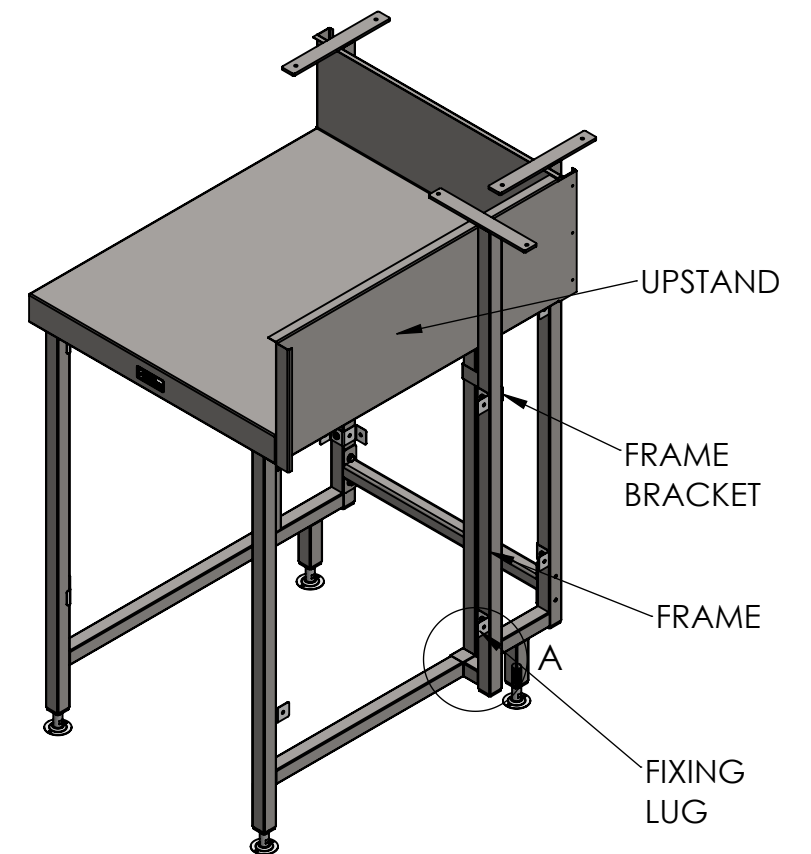


LH

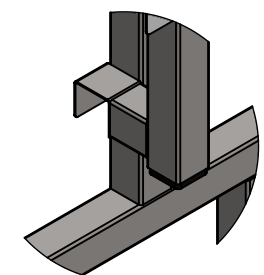
RH



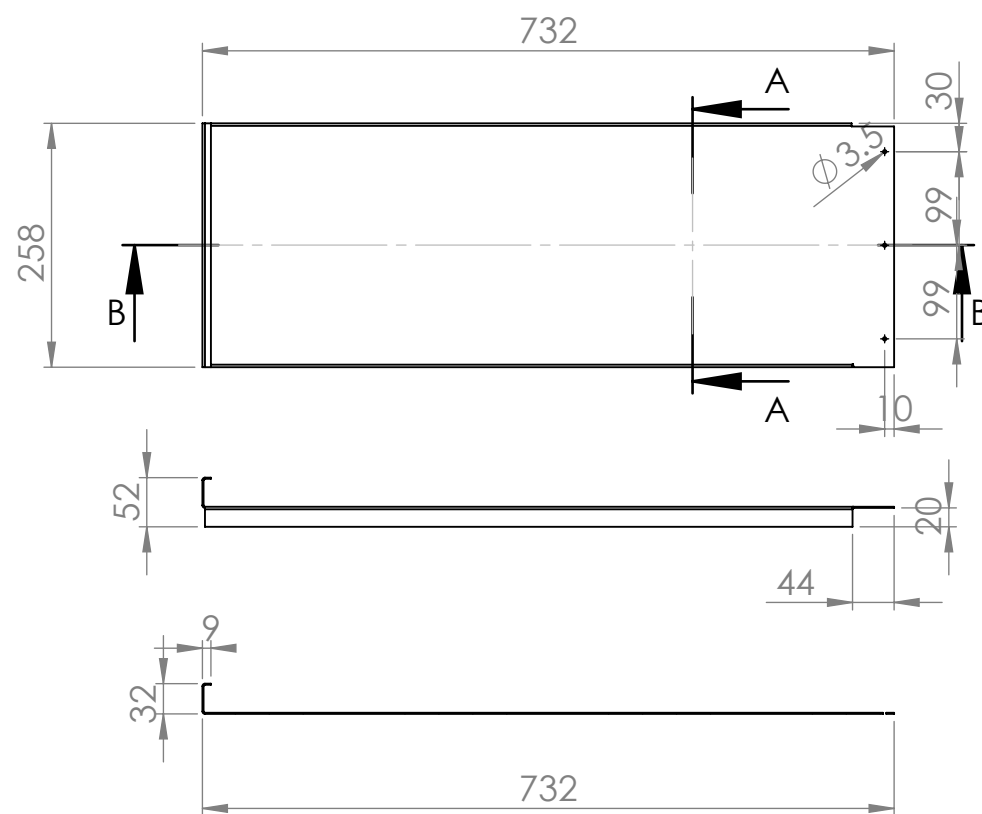
BENCH NOT INLCUED,  
FOR ILLUSTRATION ONLY.



DETAIL B

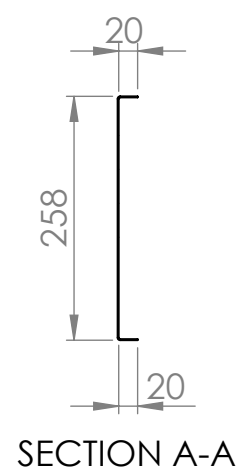


DETAIL A

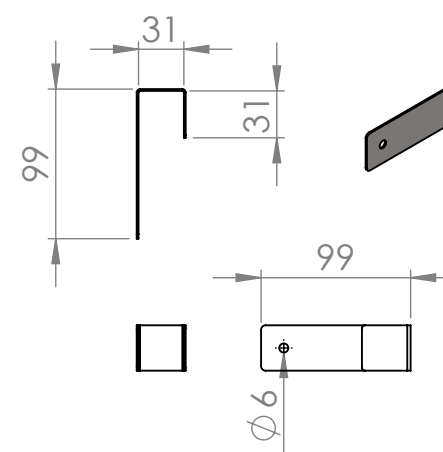


SECTION B-B

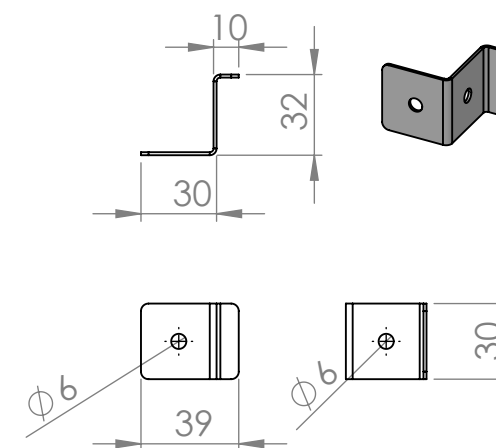
**UPSTAND**  
SCALE:1:8@A3



SECTION A-A



**FRAME BRACKET**  
SCALE:1:5@A3



**FIXING LUGS**  
SCALE:1:3@A3

## SBM END PANEL KIT, 700 SERIES

**SIMPLY STAINLESS**  
Modular Bar Solutions  
COPYRIGHT © 2023  
This drawing is the property of CI GROUP PTY LTD. Tradings as SIMPLY BARS and It may not be copied, reproduced or modified in whole or in part without prior written permission of CI GROUP PTY LTD. SIMPLY BARS reserves the right to change specification and design without notice.

**SBM-CS-6-0950**  
**Standard Product**

SIZE: A3

SCALE: VARIES

### CONSTRUCTION NOTES :

1. FRAME MADE FROM 30x30mm STAINLESS STEEL SQ TUBE.
2. UPSTAND MADE FROM 304 GRADE, 1.2mm STAINLESS STEEL.
3. FIXING LUGS MADE FROM 1.2mm STAINLESS STEEL.

