

SIMPLY STAINLESS

Modular Bar Solutions

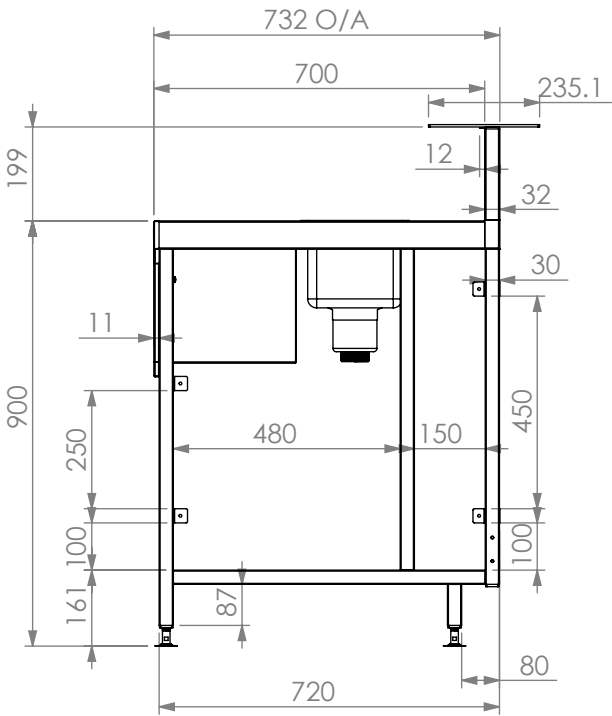


SBM-BL-6-0600



SBM-BL-7-0600

SPECIFICATION	
Tops	- High quality 304 grade stainless steel. - 1.2mm gauge, no. 4 Finnish.
Core	- 3mm zincalume. - Backing. - Marine grade protective paint .
Hand Basin	- 11 litre hand basin included. - Watermark waste included.
Frames	- 30mm square stainless steel tube. - Satin polished, adjustable stainless disc feet .
Servery	- 5mm stainless steel flatbar. - Welded to frame. - 2 fixing holes.



NOTE:
1. 700mm DEEP MODULE ELEVATION SHOWN.

SBM-BL	BLENDER STATION			
	Product Code	Dimensions (mm)	Unit weight (Kg)	Load Capaci y (Kg)
	SBM-BL-6-0600	600x600x900	30	50
	SBM-BL-7-0600	600x700x900	32	60



**100%
RECYCLABLE
STAINLESS STEEL**

