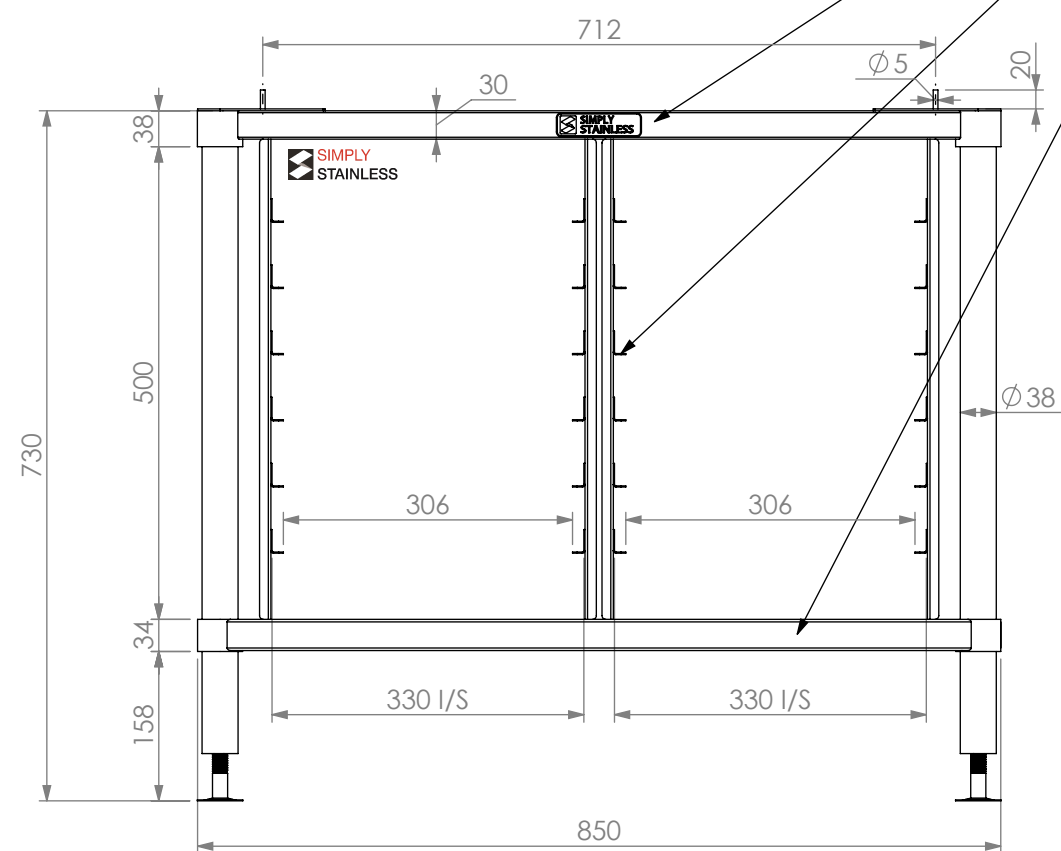
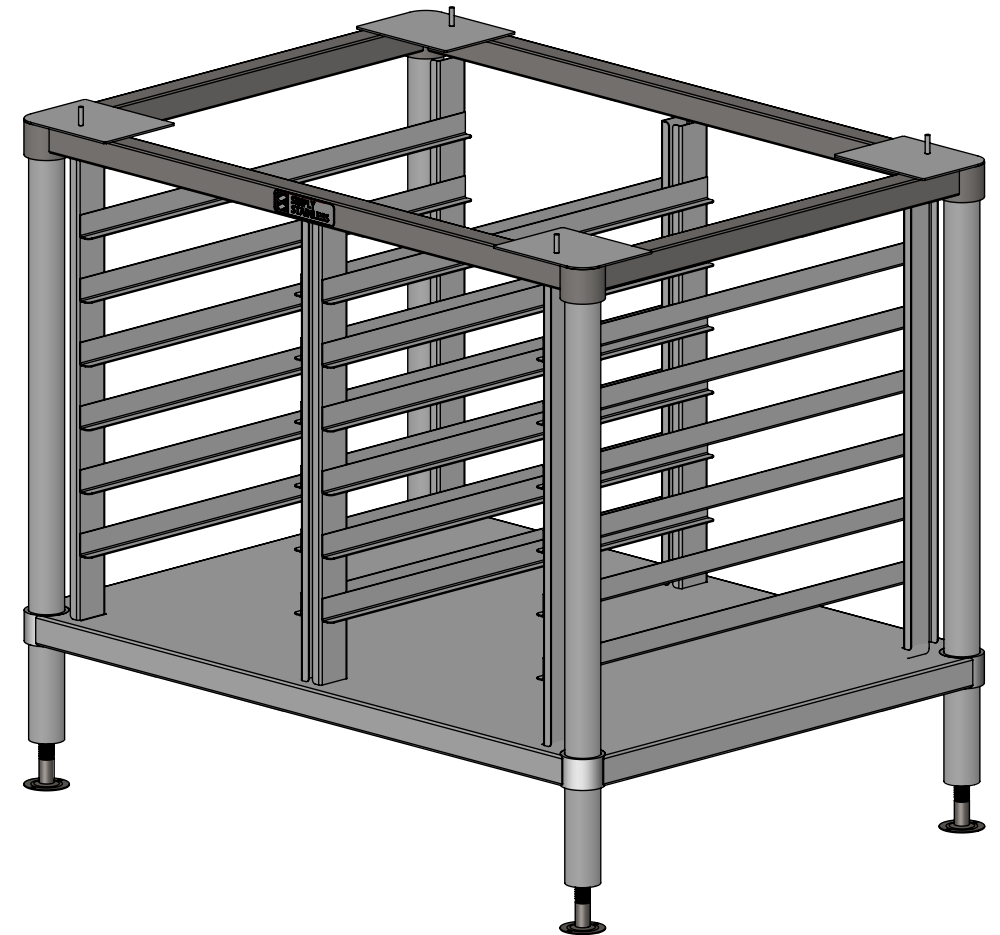


- FOOT MOUNT PLATE
- 30x30mm SQ TUBE
- CASSETTE FRAME
- UNDERSHELF



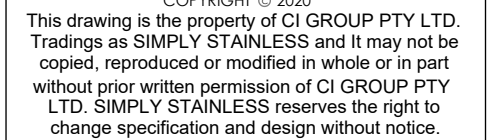
Technical drawing of the Simply Stainless 1000 refrigerator. The drawing shows the front view with dimensions and material specifications.

Dimensions:

- Overall width: 555
- Overall height: 730
- Internal width (between shelves): 615
- Shelf spacing (between shelves): 70
- Shelf thickness: 70
- Door thickness: 38 (indicated as $\varnothing 38$)

Material: SIMPLY STAINLESS

SIDE ELEVATION



SIZE: A3

SCALE : 1:10

CONSTRUCTION NOTES :

1. FRAME MADE FROM Ø38mm ROUND TUBE & 30mm SQ TUBE STAINLESS STEEL.
2. UNDERSHELF MADE FROM 1.2mm STAINLESS STEEL.
3. FEET ARE ADJUSTABLE STAINLESS STEEL DISC SHAPED FEET.

27 - RATIONAL STAND