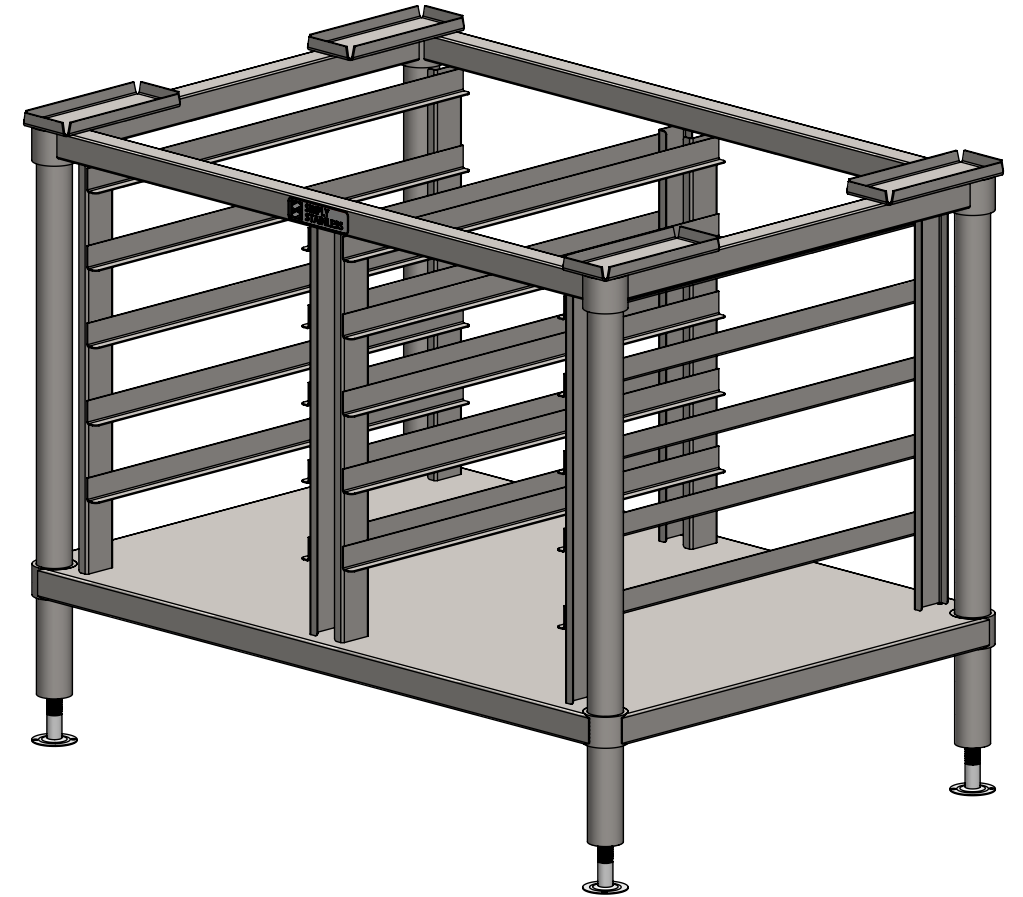


PLAN

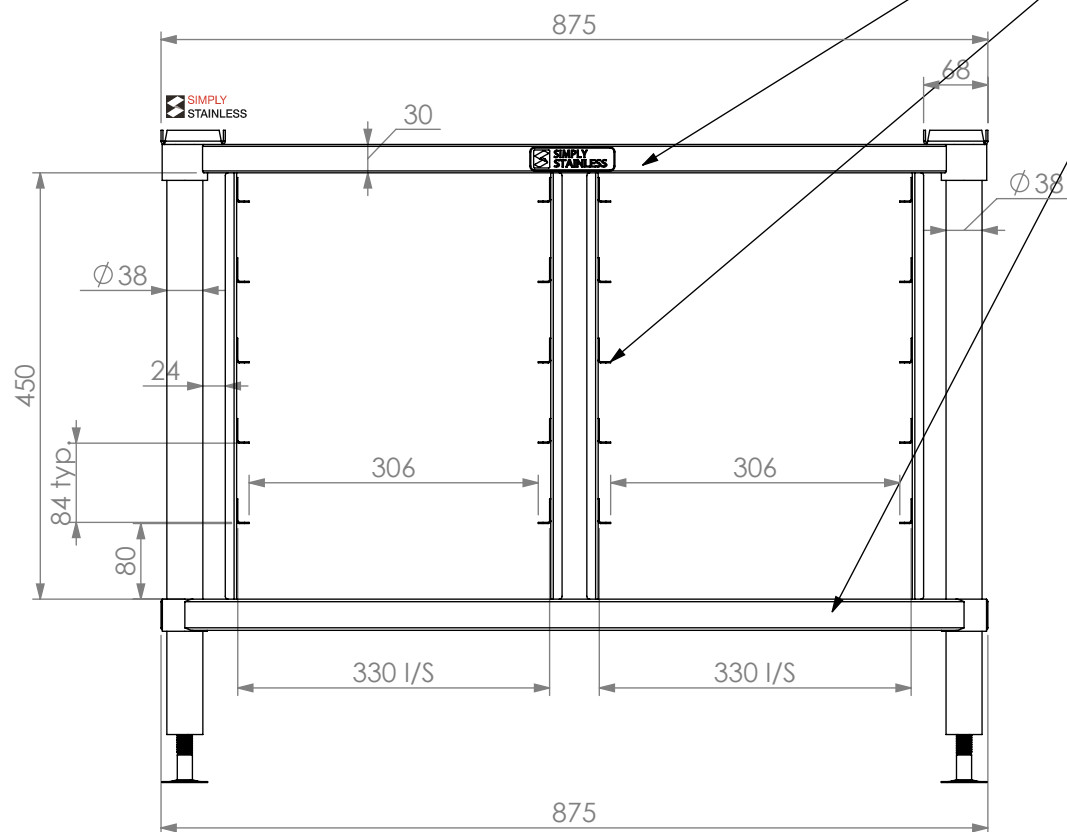


FOOT MOUNT PLATE

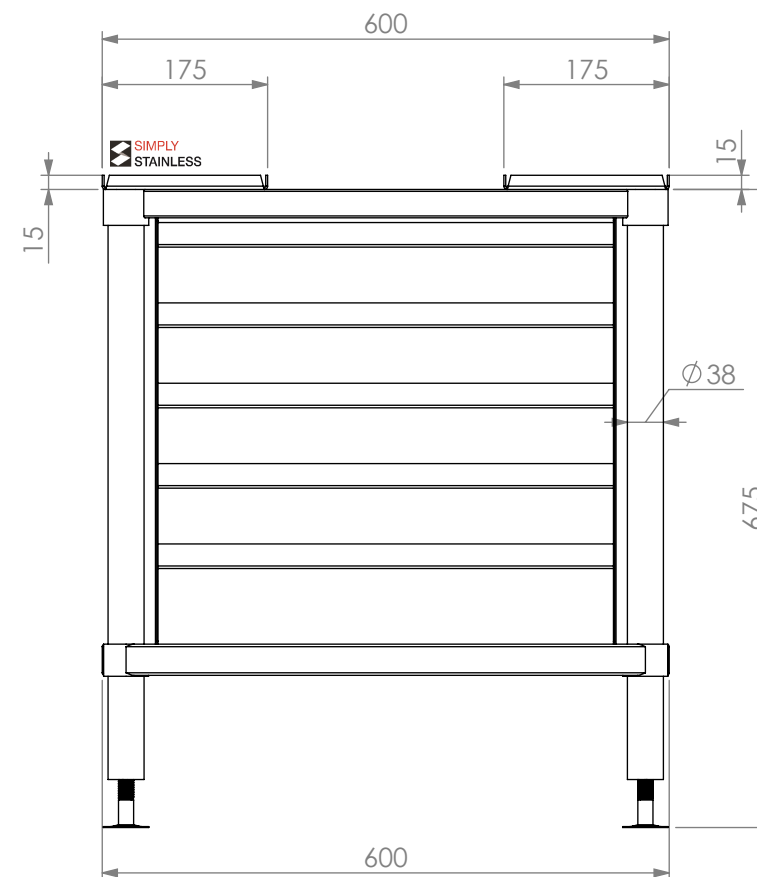
30x30mm SQ TUBE

CASSETTE FRAME

UNDERSHELF



FRONT ELEVATION



SIDE ELEVATION

**27-CONV 6.10 & 10.10**



www.simplystainless.com  
Modular Sinks Tables and Shelving  
COPYRIGHT © 2020

This drawing is the property of CI GROUP PTY LTD.  
Tradings as SIMPLY STAINLESS and It may not be  
copied, reproduced or modified in whole or in part  
without prior written permission of CI GROUP PTY  
LTD. SIMPLY STAINLESS reserves the right to  
change specification and design without notice.

**27-CONV 6.10 & 10.10**

SIZE: A3

SCALE: 1:8

**CONSTRUCTION NOTES :**

1. FRAME MADE FROM Ø38mm ROUND TUBE & 30mm SQ TUBE STAINLESS STEEL.
2. UNDERSHELF MADE FROM 1.2mm STAINLESS STEEL.
3. FEET ARE ADJUSTABLE STAINLESS STEEL DISC SHAPED FEET.