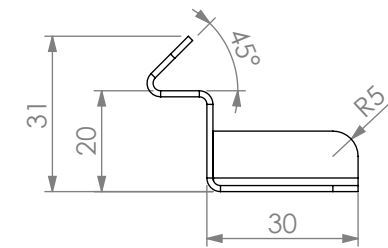
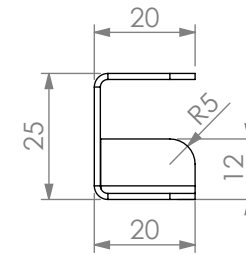


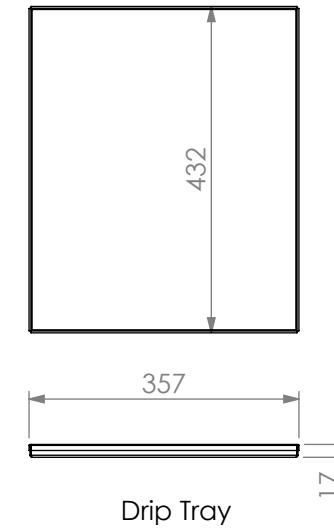
PLAN



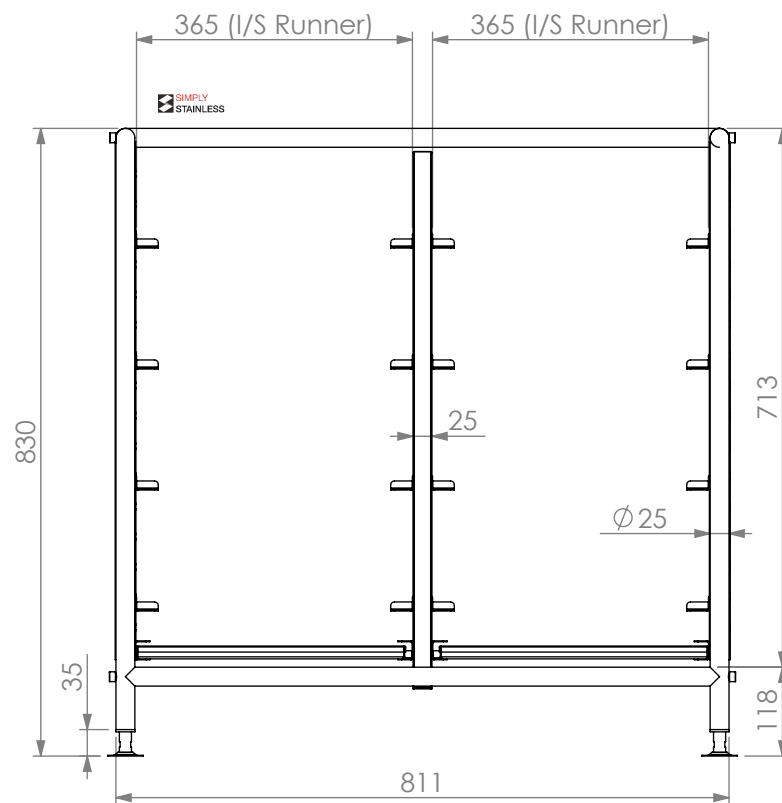
Adjustable glass rack runner profile



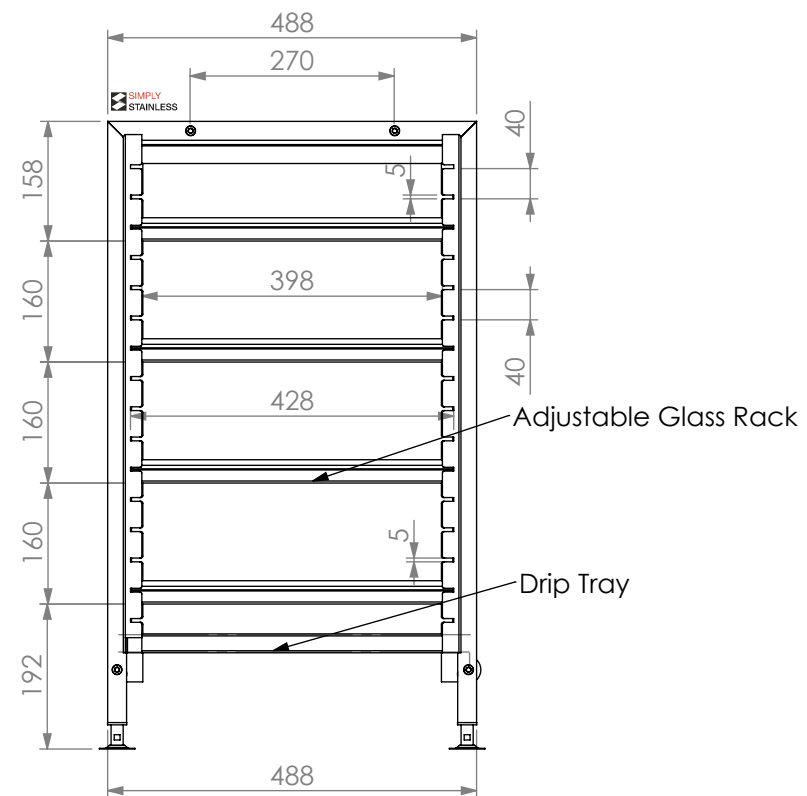
Drip tray runner profile



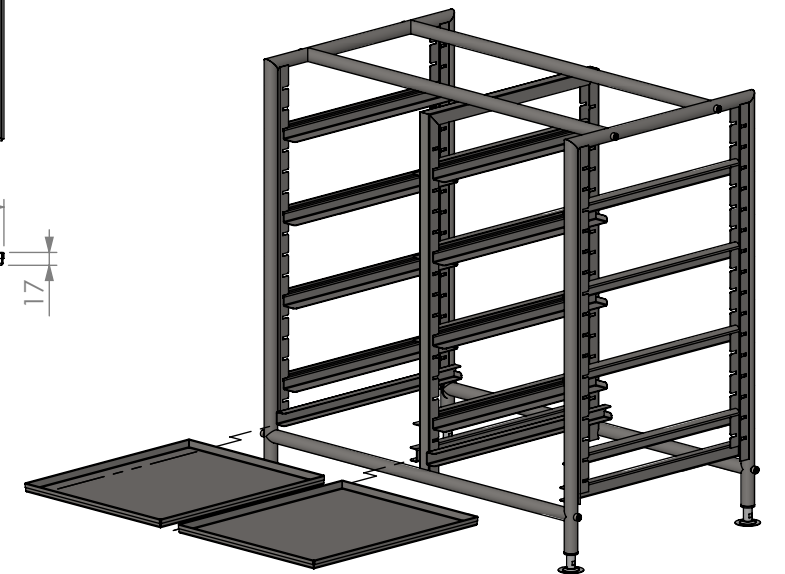
Drip Tray



FRONT ELEVATION



SIDE ELEVATION



COPYRIGHT © 2023

This drawing is the property of CI GROUP PTY LTD. Tradings as SIMPLY STAINLESS and It may not be copied, reproduced or modified in whole or in part without prior written permission of CI GROUP PTY LTD. SIMPLY STAINLESS reserves the right to change specification and design without notice.

36-DGR DOUBLE GLASS RACK

SIZE: A3

SCALE: 1:10

CONSTRUCTION NOTES:

1. FRAME MADE FROM Ø25MM STAINLESS STEEL TUBE.
2. FEET ARE STAINLESS STEEL ADJUSTABLE DISC SHAPE.
3. DRIP TRAY 1.2mm STAINLESS STEEL.



36-DGR