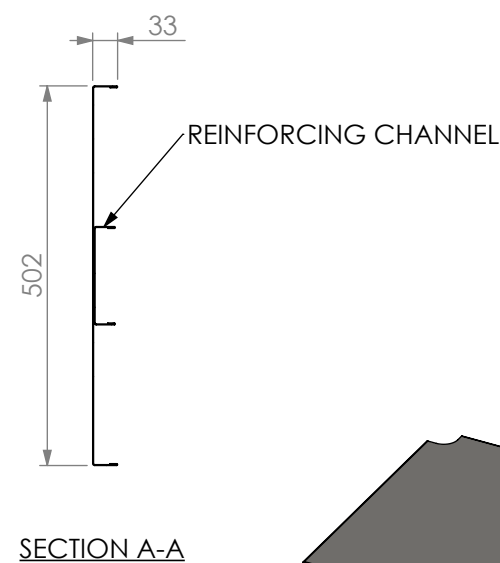
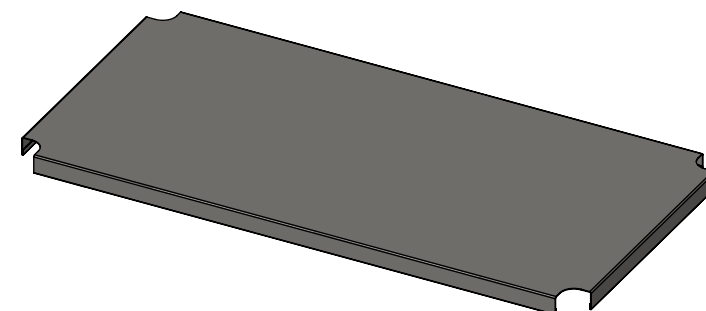


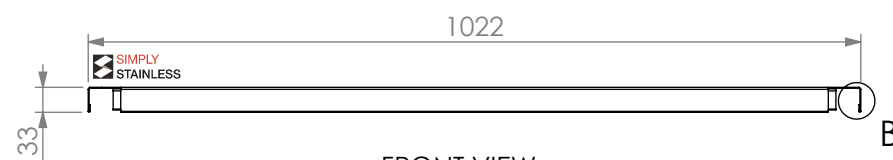
PLAN



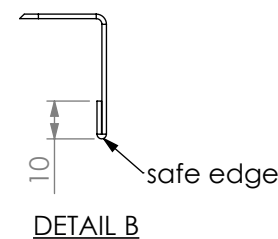
SECTION A-A



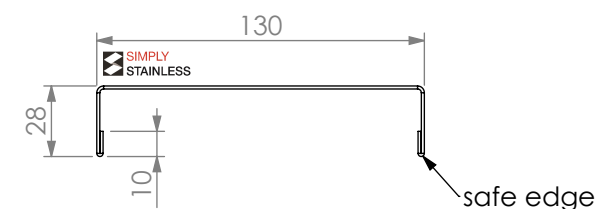
ISOMETRIC VIEW



FRONT VIEW

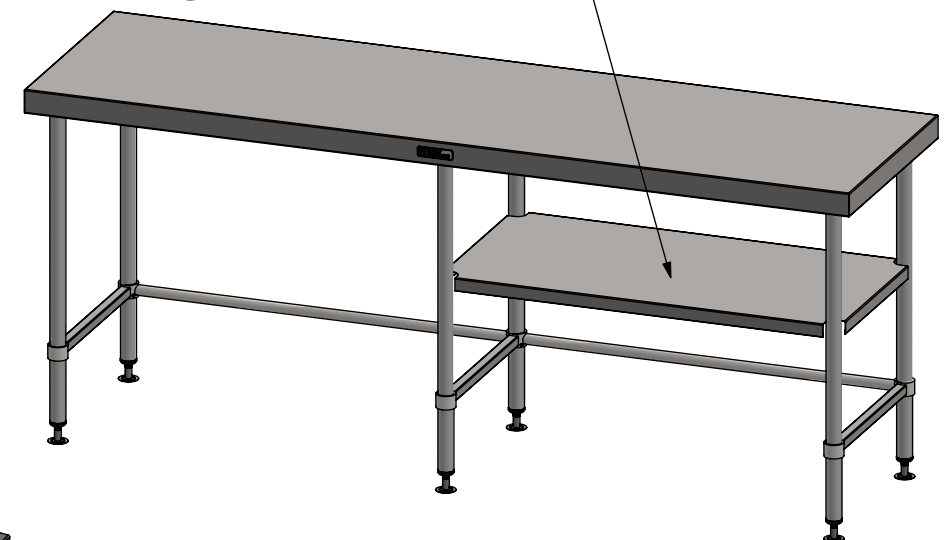
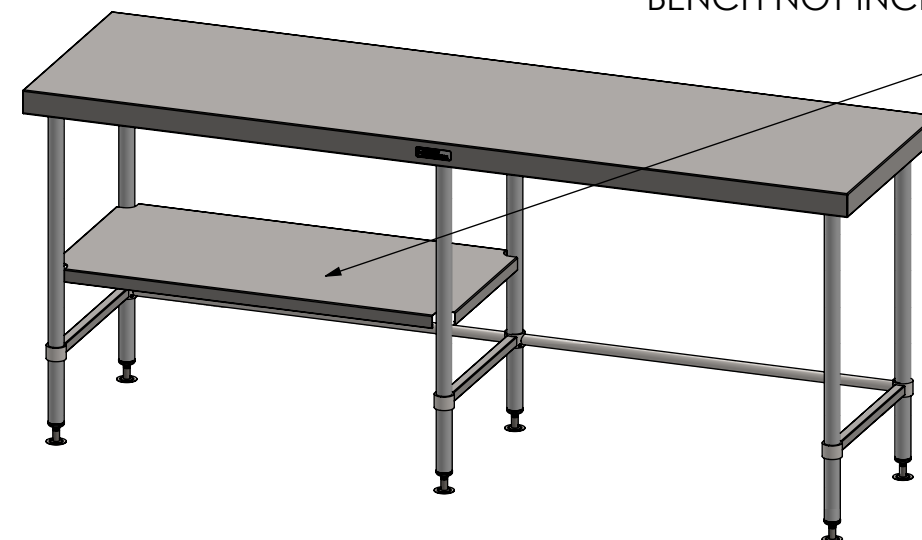


DETAIL B



REINFORCING CHANNEL  
DETAILS

UNDERSHELF ASSEMBLY DETAILS.  
BENCH NOT INCLUDED. (CAN FIT LEFT OR RIGHT SIDE)



**21-LBUS-6-2100**  
**TO SUIT 1 SIDE OF 2100 LEG BRACE 600 SERIES**

**SIMPLY STAINLESS**  
Modular Sinks, Tables & Shelving  
COPYRIGHT © 2023

This drawing is the property of CI GROUP PTY LTD. Tradings as SIMPLY STAINLESS and It may not be copied, reproduced or modified in whole or in part without prior written permission of CI GROUP PTY LTD. SIMPLY STAINLESS reserves the right to change specification and design without notice.

**21-LBUS-6-2100**  
**LEG BRACE UNDERSHELF**

SIZE: A3

SCALE : 1:10

CONSTRUCTION NOTES :

1. MADE FROM 1.2mm STAINLESS STEEL.

